



HopeCare 

HEALTH
WITHOUT
BARRIERS

ABOUT US



- Hope Care is one of the first national companies in the area of Digital Health to combine services, technology platforms and products, allowing the delivery of a totally innovative social and health service
- Build a disruptive health care proposal that leads to better results with a social impact for citizens!

OUR PROMISE

Ensure the delivery of an excellence Digital Health service, exceeding customer expectations



REFERENCES AND CERTIFICATIONS



Proven cases at national and international level



Recognized by INFARMED and Health Regulatory Authority



EUDAMED Registered and in process of certification as Medical Equipment Class IIb- Phase 2 completed.



Microsoft Preferred Solution



Proprietary Digital Health Solution



Certidão de Registo

N.º DE REGISTO DO ESTABELECIMENTO
E133957

O Conselho Administração da Entidade Reguladora da Saúde certifica que a entidade Hope Care, S.A., com sede/domicílio fiscal na morada Parque Tecnológico de Óbidos, Rua da Criatividade, Edifícios Centrais, N.ºA - 2510-216 Óbidos, está inscrita como prestador de cuidados de saúde desde o dia 23 de Janeiro de 2017.



CERTIFICADO N.º 050/DM/2019/V01/2019

Nos termos do disposto no Decreto-Lei n.º 145/2009, de 17 de junho, e na Deliberação n.º 516/2010 de 03 de março, presente certifica a Diretora da Direção de Inspeção e Licenciamentos do INFARMED, I.P. a regularidade da apresentação da notificação para o exercício da atividade de FABRICO de dispositivos médicos realizada por HOPE CARE S.A., NIPC510108288.



PROVEN IMPACT



50% reduction in Hospital Readmission
30% reduction in emergency episodes

<https://www.sns.gov.pt/noticias/2017/02/21/chuc-telemonitorizacao-da-dpoc/>



56% reduction in Hospital Readmission
45% reduction in the number of days of hospitalization
85% reduction in emergency episodes
16% reduction in mortality rate

<https://www.tsf.pt/especiais/coracao-de-portugal/telemonitorizacao-de-insuficiencia-cardiaca-abrange-31-doentes-no-centro-hospitalar-cova-da-beira-13129189.html>



55% reduction in Hospital Readmission
66% reduction in Emergency room visits to GP
61% reduction in Emergency room visits to Hospital
55% reduction in GP consultations
Less hospitalization days – AVG 10,1 days to 8,5 days

https://www.justnews.pt/noticias/doentes-chronicos-mais-complexos-com-enfermeiros-gestores-de-caso-na-uls-do-litoral-alentejano/#.XaX8p_0o8wB

“Digital therapeutics that win public reimbursement must have solid proof of their efficacy. A market strategy that helps build that proof is therefore essential.”

[The European path to reimbursement for digital health solutions | McKinsey](#)

A 3D rendering of a puzzle with one red piece standing out among many grey pieces. The red piece is positioned in the center-right of the frame, and the grey pieces are arranged in a grid-like pattern around it. The lighting creates soft shadows, giving the pieces a three-dimensional appearance.

OUR VISION

THERE IS A CRITICAL NEED FOR A BETTER APPROACH TO SUPPORTING PEOPLE



CORRELATE DAY TO DAY ACTIVITIES WITH CUSTOMER HEALTH BEHAVIOR



Health / Vital Signs Data

Objective Data from HC App:

Glucose
SpO2
Blood Pressure
Body Temperature...



Activity

Activity from Fitness and wellbeing apps
Sports preference
Sleep
Physical activity
Nutrition



Personal Behavior

Medication compliance
Mood / Stress / Pain
Holidays
Tailored Surveys
Nutrition
Virtual Visits (booking)



Environmental data

Location
Weather
Local NHS alerts – Flu, COVID-19,...
AAL Data - Home Temperature

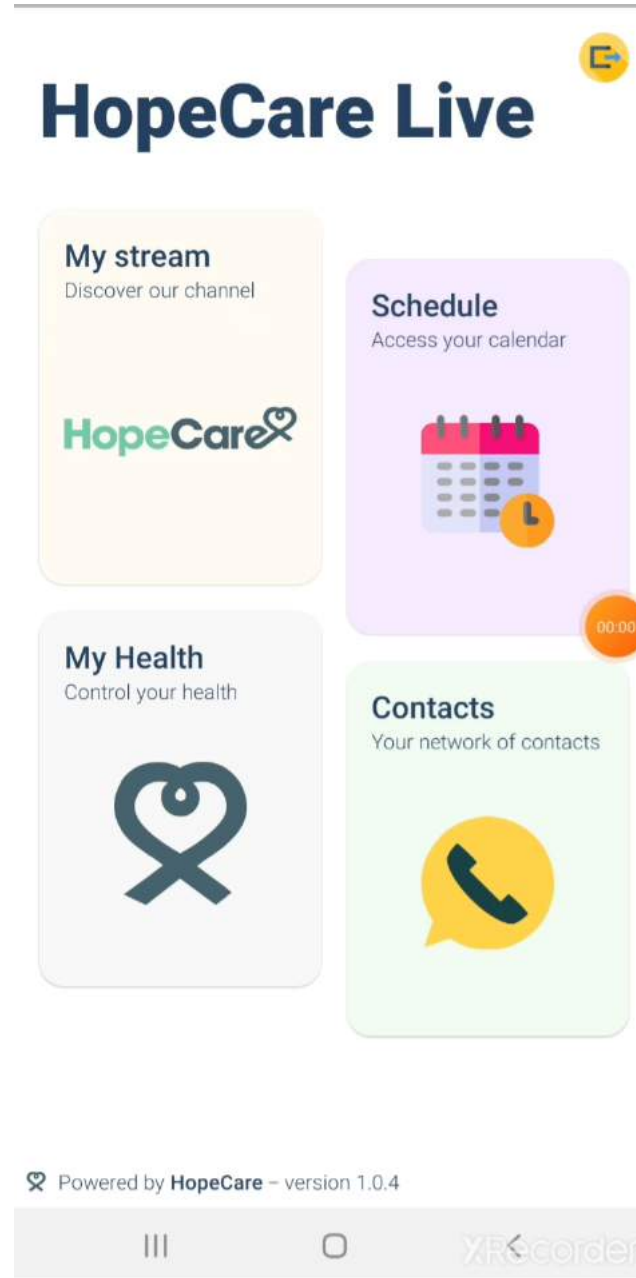


Social Data

Caregivers / Care Plan
Family and friends Portal
Social Media activity

PROXIMITY APP CONCEPT

- Telehealth and Telemonitoring in one place
- My Health - BYOD
- Family, Friends and Caregivers Contacts
- Virtual Visits appointments
- Dynamic Media Contents





WE CAN PROVIDE A TAILORED HEALTH SERVICE

Prediction

Behavioral Data

Environmental Data

Profiling

Tailored Service

WHAT MAKES MEDIRECT INNOVATIVE / DIFFERENT

DIVERSITY:
ACCESS TO ALL
PEOPLE

PROMOTING
DIGITAL
LITERACY

ECOLOGICAL
SUSTAINABILITY

SOCIAL
RESPONSIBILITY

THANK YOU!

HopeCare 

Jose Paulo Carvalho
Founder and COO
+351 937 901 278
jose.carvalho@hope-care.pt